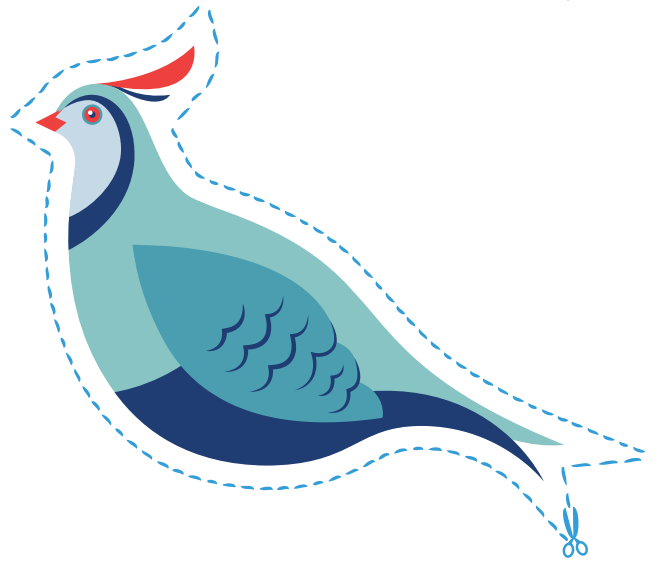
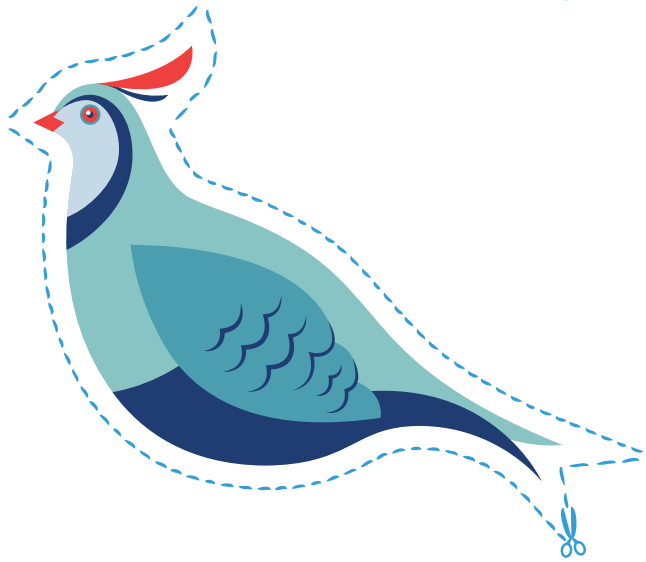
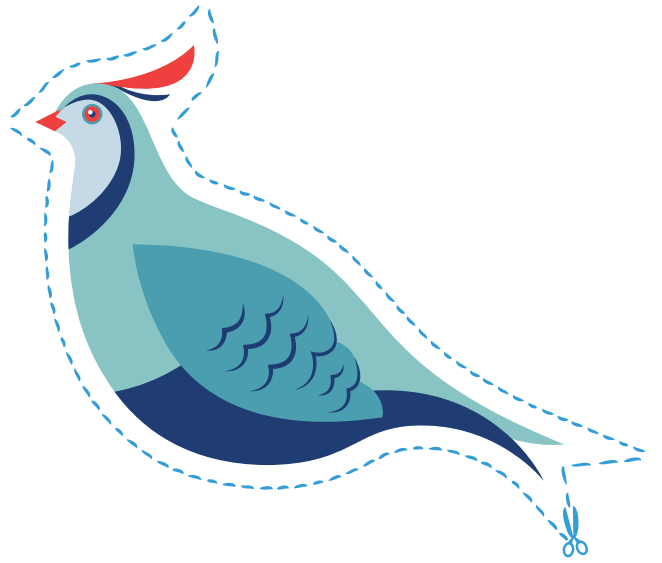
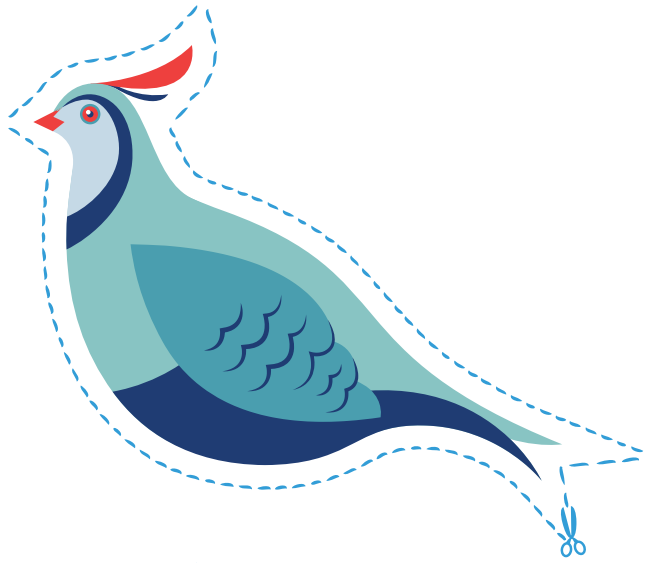
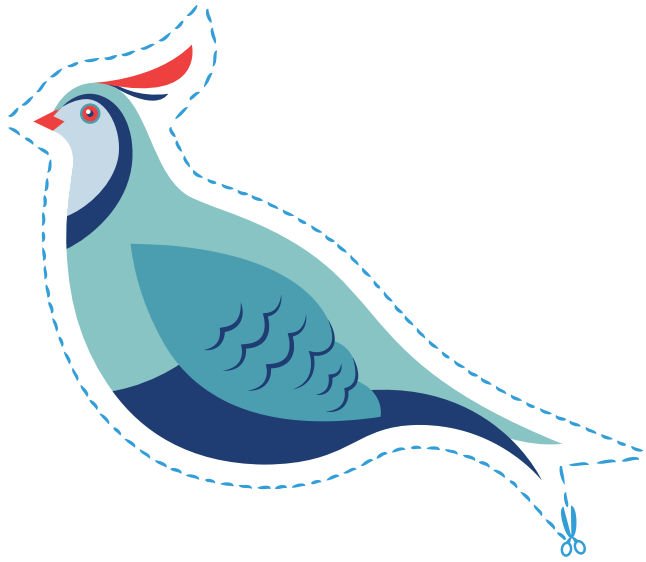


Wallace & Gromit's **BIG** CHRISTMAS DRESS UP!





Pear Tree

PIN
THE PARTRIDGE
ON THE PEAR TREE

- Ask a grown-up to cut out the six partridges provided and add sticky tack to the back of each one.
- Take it in turns to be blindfolded and try and stick a partridge in the nest on the pear tree.
- The closest attempt wins!

