

WALLACE & GROMIT'S GRAND APPEAL ANNUAL REPORT 2020





CONTENTS

- 3 Report of the Trustees
- 4 Letter from the Chairman
- 5 Map of area served
- 6 Who we are
- 8 Your fundraising stories: Community & Events
- 10 Your fundraising stories: Companies
- 12 Your fundraising stories: Philanthropy
- 14 Our impact and achievements
- 16 Funding invested in Bristol Children’s Hospital and the Neonatal Intensive Care Unit
- 21 The world of Gromit Unleashed
- 22 What’s next?
- 23 25 years of thanks
- 24 Structure, Governance and Management
- 27 Statement of the Trustees Responsibilities
- 28 Report of the Independent Auditors
- 32 Consolidated Statement of Financial Activities
- 32 Consolidated Balance Sheet
- 33 Consolidated Cash Flow Statement
- 34 Notes to the Financial Statements

REPORT OF THE TRUSTEES

For the year ended 31 March 2020

The Trustees, who are also the directors of the charity for the purposes of the Companies Act 2006, present their report with financial statements of the charity for the year ended 31 March 2020. The Trustees have adopted the provision of Accounting and Reporting by Charities: Statement of Recommended Practice applicable to charities preparing their accounts in accordance with the Financial Reporting Standard applicable in the UK and Republic of Ireland (FRS 102) (effective 1 January 2019).

REFERENCE AND ADMINISTRATIVE DETAILS

Registered Charity 1043603
Registered Company 3008531

TRADING SUBSIDIARY

Cracking Enterprises Ltd
Company 3296361

CONTACT DETAILS AND REGISTERED OFFICE

30-32 Upper Maudlin Street
Bristol
BS2 8DJ

 grandappeal.org.uk

 hello@grandappeal.org.uk

 0117 927 3888

PATRONS

Nick Park CBE
David Sproxton CBE
Peter Lord CBE

MEDICAL ADVISORY COMMITTEE

Dr Giles Haythornthwaite
Dr Anoo Jain
Dr James Fraser
Mr Mike Carter

TRUSTEES

Jos Moule
Simon Cooper
Mike Norton
Angie Last
Mike Lea - appointed 1st October 2019

COMPANY SECRETARY AND DIRECTOR

Nicola Masters

BANKERS

Lloyds Bank PLC
Bristol
BS1 4AQ

AUDITORS

Moore
29 St Augustine’s Parade
Bristol
BS1 4UL

LAWYERS

Veale Wasbrough Vizards
Narrow Quay House
Bristol BS1 4AQ

LETTER FROM THE CHAIRMAN

Welcome

As I write, we are processing the effect of COVID-19 on Bristol Children’s Hospital and the Neonatal Intensive Care Unit at St Michael’s Hospital, and I am in awe of the fantastic work from the hospital staff on the frontline supporting seriously ill young patients from Bristol, all over the South West of England and South Wales. I also reflect on the NHS response to the pandemic, and in particular how that has affected the work of The Grand Appeal, as The Bristol Children’s Hospital Charity.

In March 2020, at the end of the period under review in this Annual Report, the Appeal immediately responded to the needs of Bristol Children’s Hospital by ensuring that, where possible, our support continued to address the unique challenges faced by patients, families and staff, and as an Appeal we rose to that challenge:

- Our three family accommodation houses were adapted and resourced to ensure that families travelling to Bristol from such a wide geographical area were able to stay close to their sick baby or child whilst they were treated in Hospital.
- Our family support team continued to provide operational, financial and emotional support to families facing enormous challenges of parenting a sick child, often hundreds of miles away from home, during the Covid pandemic.
- Our play team continued to work with patients throughout the period, offering a lifeline for children who, already feeling isolated, were able to enjoy something of a normal childhood.

During the year, our programme of investment in Bristol Children’s Hospital continued apace. As you will read in this report, over the year, the charity has invested in life-saving equipment; pioneering medical research; arts, music, comforts and play programmes for patients; and infrastructure projects internally and externally in the hospital to support their staff, patients and

families. As the dedicated Bristol Children’s Hospital Charity, we work closely with the hospital to ensure that our programme of investment is targeted to areas of the most need where NHS funding is unavailable. To continue our ground-breaking activity, we have exciting plans to invest in new multi-million pound facilities to support the hospital in the coming years, as well as ensuring that our work helps to keep the children’s hospital at the forefront of medical care and treatment in the UK.

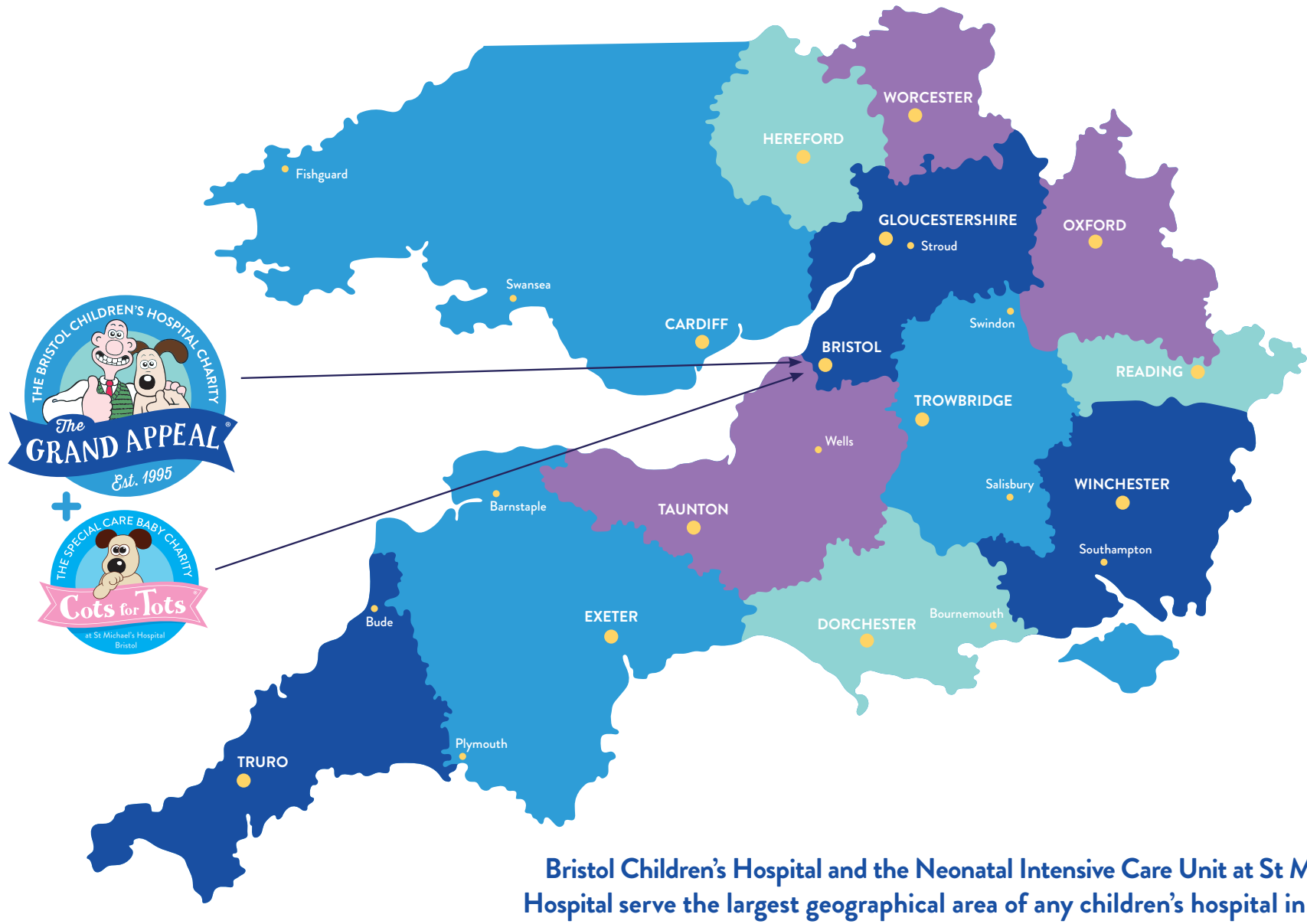
2020 was the 25th anniversary of The Grand Appeal’s inception as the hospital’s dedicated charity. We would like to extend our thanks to Aardman for an historic relationship spanning a quarter of a century, and to all those donors and supporters who have continued to support the Appeal over many decades. Your support is vital to our work, and from the whole Board we offer our grateful thanks.

In closing, I would like to thank everyone involved with the opening of our third family accommodation facility – Grand Appeal House – in January 2020. This new home-from-home gives an additional nine families the opportunity to stay with their sick child in hospital. On behalf of the board, directorship and staff, we offer our grateful thanks to all our donors, supporters, fundraisers and volunteers for their enduring support.



Jos Moule
Chairman,
Wallace & Gromit’s Grand Appeal

AREA SERVED BY BRISTOL CHILDREN’S HOSPITAL & ST MICHAEL’S NICU

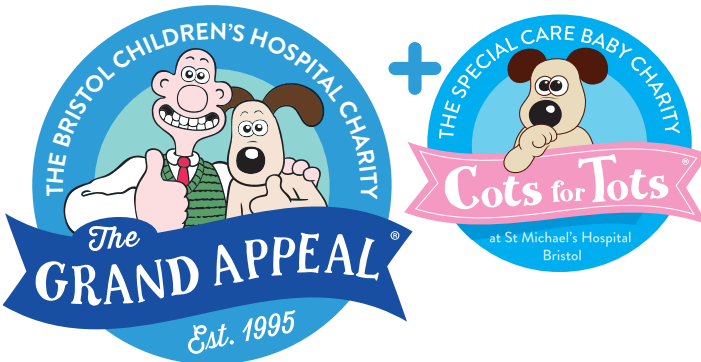


Bristol Children’s Hospital and the Neonatal Intensive Care Unit at St Michael’s Hospital serve the largest geographical area of any children’s hospital in England.

WHO WE ARE

WALLACE & GROMIT'S GRAND APPEAL IS THE DEDICATED BRISTOL CHILDREN'S HOSPITAL CHARITY

The Grand Appeal works in partnership with Bristol Children's Hospital and through our unique Cots for Tots Appeal, the Neonatal Intensive Care Unit (NICU) at St Michael's Hospital, Bristol, to fund a multi-million-pound portfolio of investment in life-saving equipment; pioneering research; family accommodation and support; arts, music, play and entertainment programmes; as well as direct support for growth and investment in wards, departments and digital services. The charity aims to ensure 360 degree support to enable the hospital to offer the best possible treatment and care for their young patients.



SUPPORT FOR BRISTOL CHILDREN'S HOSPITAL AND NICU

We put the top technology in the most talented hands, like the UK's first-ever paediatric Cardiac Hybrid Theatre, an intraoperative 3T MRI Scanner – one of only three in children's hospitals across Europe – and a ground-breaking neuro-robot, which helps neurosurgeons perform major operations with pinpoint precision. We give the best resources to the brightest minds, so experts in various fields can continue their ground-breaking research, like they are doing with our 3D Cardiac Bioprinting unit. We build unparalleled facilities, like the Brain Lab, where the team's incomparable expertise is matched by stellar equipment, so their extraordinary patients stand the best chance of getting better.

GRAND APPEAL ACCOMMODATION AND SUPPORT

We operate three home-from-home family accommodation facilities enabling the parents and families of sick children to stay close to their child in hospital. We employ specialist support staff on the ground in the hospital – from specialist play staff, to music therapists, to family support teams and education teams to ensure every aspect of hospital life is centred on the wellbeing of the young patients and their families. We also work with the hospital to create a child-friendly environment and a programme of arts, music and play therapies to make the hospital a happier place for its patients.

OUR COMMERCIAL ENTERPRISE

Our Gromit Unleashed team operates the charity sector's most innovative commercial and retail enterprise from our flagship store at The Mall at Cribbs Causeway which continues to flourish thanks to the incredible support of tens of thousands of supporters from the Gromit Unleashed and Shaun in the City trails since 2013. All profits are gifted annually to the Appeal. The Gromit Unleashed team create, produce and deliver retail product – including the production and sale of over 250,000 figurines – to a fanbase of Gromit Unleashed trail supporters, not just in Bristol, but throughout the UK and worldwide. Gromit Unleashed trail events have raised many millions of pounds to support the primary purpose activity of the charity.

OUR FUNDRAISING

Our work is possible thanks to an army of our incredible fundraisers, supporters and our dedicated volunteers. Each year, our corporate fundraising team works with driven and dedicated companies; our community and events team meets passionate people from all walks of life; and our philanthropy team works with our generous major supporters and generous grant-giving trusts. Patients and families as beneficiaries continue to give back to support the hospital and staff they are so thankful for.

Our fundraising family surprise us every year with their ingenuity, creativity and generosity and we treasure each and every donor through whose incredible support we can continue to give seriously ill children and their families the bright future they deserve.



“After completing our 874 miles team challenge it was great to visit the Dolphin Ward and see for ourselves where the money we raised would be spent. It is clear that the ward is not just centred around the patients but also their families; ensuring it is a friendly environment for all. A great cause.

Natalie Keable,
Assistant Relationship Director, Lombard



“Staying at hospital was okay because the staff were really nice and you couldn't get bored because the playroom had DVD's, books and puzzles. I decided I wanted to raise money for the hospital so they could help more children.

Erin,
Young fundraiser who completed a sponsored hair chop



“We feel lucky to have such an amazing children's hospital in Bristol and Tom and I are fully aware that fundraising is necessary to maintain its state-of-the-art equipment and facilities. So, it's incredibly rewarding to contribute to that.

Annie,
Mum of patient Oliver
and co-owner of TWS Plumbing and Heating Ltd

YOUR FUNDRAISING STORIES: COMMUNITIES AND EVENTS

Fundraising is all about community. Whether you are taking part in an event with friends, family, colleagues or complete strangers, you are all there to give back, together. And every year, we meet more and more people who amaze us with their super-human efforts. Some heroes wear capes, but ours? They wear Wrong Trousers, exercise kit, aprons, Christmas jumpers and so much more. Here's to our community of fundraising heroes, you all rock!



12-year-old **Hannah** completed a truly mammoth challenge after cycling from Land's End to John O'Groats in 17 days. Her pedal power raised £2,500.

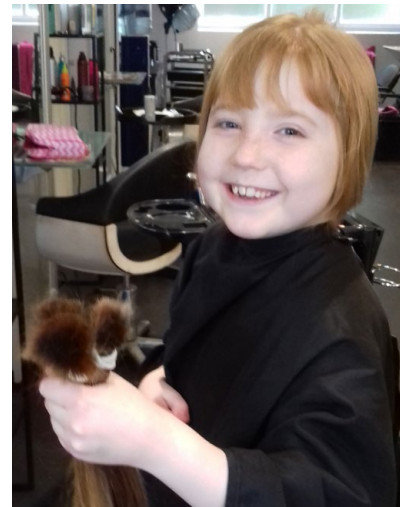
NICU nurse **Emma** was joined by our army of knitters to congratulate her for reaching an incredible milestone – raising a huge £30,000 for the very unit she works on. There was plenty of cake, in true Cots for Tots style!



The **Wescott family** got into the fundraising spirit by tackling a 'Tough Mudder' event' as well as raising some dough through a bake sale – over £2,900 to be exact!



June saw our high-flying fundraiser and volunteer **John** take on his latest challenge for Bristol Children's Hospital, abseiling down the side of Portsmouth's Spinnaker Tower. His latest effort raised over £4,000 and counting! John's not stopping there either - he is already busy deciding what he wants to do next.



Former Bristol Children's Hospital patient, nine-year-old **Erin**, said goodbye to her long locks, when she raised £3,000 from a sponsored hair chop.



Our first ever **Bubble Rush** burst into Bristol, quite literally, when over 250 supporters had fun in the foam.



In September, we welcomed 27 heroes back to Bristolian soil after they smashed our **Land's End to Bristol challenge**. Having conquered the 250-mile ride, this brilliant bunch have cycled their way into our fundraising family while making memories they'll cherish forever.

Christmas in Bristol isn't complete without a visit to the **Brailsford's** legendary light display! For 25 years they've transformed a quiet street in Brenty into a winter wonderland, raising over £74,000 to date.



The brilliant **Bristol Japanese Cultural Society** invited visitors to explore Japanese culture whilst giving to a good cause. Their event, which raised £3,000, included a whole host of traditional activities such as kimono wearing, traditional flower arranging, Japanese calligraphy, origami folding, and a Japanese tea ceremony.



Named after Diana, Princess of Wales, the Diana Award, recognises selfless young people and children doing good in the world. We couldn't think of anyone better to receive the award than 10-year-old **Edie**. After receiving a transplant at Bristol Children's Hospital, she's worked tirelessly to help others.



Over 100 schools from across the South West joined our fundraising family this year. Pupils, parents and teachers rallied together to raise over £50,000 for their children's hospital.

YOUR FUNDRAISING STORIES: COMPANIES

Developing corporate partnerships means we get to team up with some of Bristol and the South West’s best businesses. Whether it’s through dedicated fundraising days or ‘Charity of the Year’ partnerships, we’re proud to have the support of so many.



Staff at **Gallagher** spent their spring and summer taking on not one, not two, but three challenges. Their 30km walk, 200km cycle and Cotswold Way Challenge raised over a whopping £14,000.



Wainhomes got their fundraising into full swing by raising an amazing £7,500 through a golf tournament.



We ended the year with a cracking celebration with **Barcan+Kirby**. Throughout 2019, the law firm showed their support as they raised over £12,300 through a variety of fundraising activities. From raffles, to dress down days, auctions and our very own Land’s End to Bristol cycle challenge.



We launched **Play 4 All**, challenging 25 businesses to fundraise £1,000 to fund our sensory play programme at Bristol Children’s Hospital, and we were not disappointed by their efforts.



Before coronavirus completely gripped the country, the couple behind **TWS Plumbing & Heating Ltd**, organised a fantastic fundraising ball. They raised over £12,000 to thank the hospital for their son’s treatment.

CAMB Machine Knives not only celebrated its 30th anniversary but also smashed their fundraising target, reaching over £32,000.



Thanks to **NMI**, we’re the first charity to use contactless donation technology in an arts trail. This cracking innovation was recognised at the Third Sector Business Charity Awards, where together we were Highly Commended in the technology category.

After a colleague’s son was born with a serious heart condition, employees at **CMS Cameron McKenna** got together and raised over £10,000 for **Cots for Tots**.



Our newest family accommodation facility, Grand Appeal House, received £15,000 from the **Tesco Bags of Help** scheme where shoppers handed in a blue token of support in their thousands.



Shoppers at **The Entertainer and Pennies** continued to harness their purchase power as our long-term partners hit an incredible total of £600,000 raised.



YOUR FUNDRAISING STORIES: PHILANTHROPY

As the demand for the world-leading services provided by Bristol Children's Hospital continues to grow, we're proud to work alongside so many dedicated grant-making trusts who share our ambition: to ensure every sick child and their family receive the very best care and support.

From family accommodation, specialist support staff, and our music and play therapy programme, we've received generous gifts from new and long-standing partners, to fund our vital, annual commitments and new, innovative projects. Moreover, our philanthropic partners have played a crucial role in helping us to keep the children's hospital at the very forefront of paediatric care by funding state-of-the-art equipment, including a 3D printing service set to revolutionise children's cardiac surgery, and ground-breaking research programmes.

By working together to improve paediatric care at a local, national and even international level, we help save the lives of the region's sickest children. Our gratitude and thanks go to:

- **Kidney Care UK**
- **Players of People's Postcode Lottery awarding funds from Postcode Community Trust**
- **The Richard Lawes Foundation**
- **The Screwfix Foundation**
- **The Powells of Michaelstone Y Fedw Historic Trust / The Alan Powell Trust**

We were honoured to have met so many of our donors this year, giving them the opportunity to see the impact of their support first-hand.

LEGACIES

We were incredibly grateful to receive legacies from our generous supporters this year, and we are truly thankful to everyone who has chosen to remember The Grand Appeal in their will.

Leaving a legacy is a wonderful way to support us and helps us to care for our families and support the life-saving work at the hospital, long into the future. On behalf of all the young patients and their families whose lives you have helped transform, thank you.



The year ended on a high, with a special event with writer, actor and comedian **Dawn French**, co-hosted by our very own patron **Peter Lord CBE**. While Dawn took us on a whistle-stop tour of her time on the screen, we thanked some of our long term donors for their continued support.

In April, we invited some very special guests to celebrate the first anniversary of our second home-from-home, **Paul's House**. Our family accommodation houses are a lifeline for parents, who find themselves miles from home and family, and with a critically ill child to support.

Paving the way for revolutionary cardiac care, we started the year by officially launching **The Grand Appeal 3D Cardiac Bioprinter**. Printing exact replicas of patients' hearts, this pioneering piece of equipment has already had an enormous impact on the 400 young patients with congenital heart disease who undergo major heart surgery each year.

We invited our smashing set of **trail sponsors and donors** to the home of Wallace & Gromit, Aardman, to look back on our last trail, Gromit Unleashed 2, and a summer of sculpture spotting fun after it raised millions for Bristol Children's Hospital.

Every December, we're proud to be a part of **The Yogscast's** epic gaming fundraiser, **Jingle Jam**. Each year the gaming superstars of the world support eight hand-picked charities, including The Grand Appeal. This year's month-long event raised an incredible £213,808.



Cots for Tots has provided vital support to our service for many years. The charity has donated some of the most pioneering medical equipment to the unit and the transport team that helps us do our jobs.

Dr Anoo Jain, Consultant in Neonatal Medicine



Intensive care is expensive. The children we care for require a lot of pioneering life-sustaining equipment so The Grand Appeal's funding is vital in helping us to provide this. Given the huge catchment area of our unit, many of our families can live up to hundreds of miles away. The Grand Appeal provides these families with a free 'home-from-home' family accommodation just opposite the hospital whilst their child is cared for on our unit. The difference that this facility makes to our patients and their families is amazing, as it means that they can be close to their child on the unit, and removes the stress that can come from living so far away.

Lottie King, Seahorse Paediatric Intensive Care Unit Sister

OUR IMPACT AND ACHIEVEMENTS

As the dedicated children's hospital and NICU for the South West, South Wales and beyond, families are travelling further than ever before, and the complexity of conditions is only increasing required treatment at Bristol Children's Hospital. From pioneering medical equipment and ground-breaking research to specialist support staff and vital patient and family support, we invest your money where it matters most.

GRAND APPEAL FACILITIES, STAFF AND DEVELOPMENTS

We help to fund and develop first-class facilities, so that staff can provide exceptional care to patients in age-appropriate, dedicated clinical, therapy, surgical and ancillary space. We also dedicate funding to ensure that the parents and siblings of critically ill children have a comforting, free and safe place to call their own inside the hospital and in our family accommodation houses.

Paul's House & Cots for Tots House

Our two family accommodation facilities have been a home-from-home to over 2200 families since they opened in 2018 and 2012 respectively. Our houses are situated moments from the children's hospital and NICU and provide private, free accommodation and ancillary facilities to relax away from the clinical environment 24 hours a day, 365 days a year.

Grand Appeal House

Our third family accommodation home-from-home opened a stone's throw from the hospital in January 2020. With 9 en-suite rooms and associated space, it means that The Grand

Appeal now provides accommodation for 29 families across three houses. The houses are managed on the ground by a team of Grand Appeal staff led by Anne, our family accommodation Manager, ably assisted by two housekeepers to ensure that families are safe and secure in free accommodation.

Music Therapists

Music is a vital outlet for children, and whether they are banging a drum, strumming the guitar or playing the flute, our fantastic Music Therapists Claire and Karen bring smiles to over 30 children each week with their group and solo sessions across the hospital and NICU.

Arts Unleashed

Run by our new Arts Coordinator Lynne, our music, arts and play programme 'Arts Unleashed' was introduced this year, to centralise the creative activities we provide to the hospital each year. In just six months, 'Arts Unleashed' reached 2,992 patients through 166 sessions, which included collaborative painting, drumming classes, inclusive dance sessions, and shows from touring theatre companies.

Sensory Play Practitioner

Sensory play is an essential part of child development and is particularly effective as an essential outlet for children who are in pain, distressed or anxious about their stay in hospital. Marius works with a range of children aged 0-17 years with special and additional needs across all hospital specialties.

Young Person's Involvement Worker

When we begin a new hospital project, we turn to the people who know it best: the patients. Made up of passionate young people who want to effect change, our Youth Involvement Group – run by youth worker Sara – plays a key part in any development in the hospital.

Oncology Play Assistants

Our Oncology Play Assistants Aimee and Sian help courageous young cancer patients express themselves creatively through imaginative play sessions, giving them a chance to have fun and simply be a child during the often long and difficult treatments they face.

Reiki Therapist & Reflexologist

Growing evidence suggests that complementary therapies can help reduce the unpleasant side effects of cancer treatment and improve patient and parent wellbeing. Resident Reiki Therapist Raina and Reflexologist Clare can be found primarily at the Teenage and Young Adult Unit, delivering sessions to adolescent patients battling cancer. Raina also helps cancer patients at Bristol Children's Hospital, visiting children, parents and staff on Starlight, Apollo and Ocean Unit to support them throughout their treatment.

Grand Appeal 3D Cardiac Bioprinting Service

Spearheaded by Professor Massimo Caputo, bio-engineer Giovanni Biglino and our Ambassador, Professor Andy Wolf, we opened The Grand Appeal's 3D Cardiac Bioprinting Unit this year in partnership with the University of Bristol and Bristol Children's Hospital. So far, the team has printed over 200 exact models of patients' hearts, transforming the way surgeons plan and prepare for major heart surgery and the way they communicate complex heart conditions to families. Behind the scenes, the unit is facilitating revolutionary research into printing living tissue through stem cells. Grand Appeal funded staff Dr Victoria Ordonez and Andrew Shearn compliment the team.

Family support programme

Our specialist Family Support Practitioners, Bobby and Katie, help mums, dads, siblings and grandparents navigate the stresses that come with having a child in hospital. Whether those stresses are psychological, financial, or parents simply need a shoulder to cry on, our programme reaches around 50 families every month. They are trained social workers too, so in a climate of increasing threshold in community care, we help families with complex issues including behaviour, employment, safeguarding, substance-abuse or neglect. Financial pressures, childcare worries and time off work, coupled with the emotional burden of supporting a sick child, can leave families feeling isolated and lost. With your help, we work to ensure that no parent or carer is left feeling alone whilst their child is undergoing specialist treatment and care at Bristol Children's Hospital.

Our impact on patients, families, staff and developments at Bristol Children's Hospital and the Neonatal Intensive Care Unit are only possible thanks to our incredible supporters.



FUNDING INVESTED IN BRISTOL CHILDREN'S HOSPITAL AND THE NEONATAL INTENSIVE CARE UNIT

Paediatric Intensive Care research

No children's hospital can offer the best care without an intensive care unit, or a flourishing research programme with access to new clinical trials. This year we funded two dedicated Research Nurses who work in the hospital's Seahorse Intensive Care Unit (PICU) to expand vital research capacity on the unit. They help some of the sickest children onto clinical trials and help to find new and better outcomes for childhood health.

Intensive Care lifesaving equipment

Technology is always evolving, which is why we have purchased two of the latest models of critical lifesaving ventilators for the Paediatric Intensive Care Unit enabling high-frequency ventilation for critically ill babies and children with lung damage, while an advanced ECG machine monitors the hearts of the 400 young patients who have major heart surgery at the hospital every year.

Thermocare- NICU

Warming beds with a gel heated mattresses, the beds also have a cover for additional warmth for the critically ill and premature babies treated in NICU. The bed can be tilted to various angles to ensure the babies' comfort and height adjusted to allow all parents to see their baby.

Lifecard Monitors

These new monitors on the Cardiac Department allow the clinical staff to monitor the heart rhythm of patients providing valuable information to plan for medication, general response to activity and pacemaker function.

Starlight Ward refurbishment

The Grand Appeal is continuing to fund the complete refurbishment of bedrooms on the Oncology Ward where hundreds of children from across the UK and overseas come to Bristol Children's Hospital for cancer treatment. They will stay on Starlight Ward for weeks, and sometimes months. Bedrooms, circulation space and play areas have been transformed into another dimension with an out-of- this-world space theme.

You Got This

Emergency medicine can be emotionally and physically demanding. In the high pressure, intense, noisy environment of the busiest department at the children's hospital, staff can be left feeling tired, stressed, unappreciated or unmotivated. That's why we are funding part of the department's 'You Got This' wellness programme, including staff awards and 'cakes of gratitude.' Sometimes the little things are just as impactful as big developments, and it's a great way that we are able to show the hospital staff just how appreciated they are.

'Your NICU Story' diaries

Every baby born on NICU has its own unique story. There are often highs and lows during a baby's unique journey on the unit and we are enormously proud to have created a diary in collaboration with the unit for parents to use throughout to document their time in hospital. The 'Your NICU Story' diary will record precious memories that will form a keepsake for years to come; whether it is the first time their baby opens their eyes or perhaps their first smile or even the very first time they hold their baby after weeks of watching them grow stronger inside an incubator. We hope that by being able to document their baby's journey parents can process the worries and stresses that come with having a special care baby.



Orientation videos

Coming to hospital, especially when you are young, can be a scary experience. We have an ongoing programme to fund orientation films for wards and departments throughout the hospital, featuring past and present patients, to show new residents of the ward just how it works from a young person's perspective.

Cardiac HDU Cubicles & Bay Refurbishment

Patients needing complex heart surgery or those born with a heart defect are cared for by the fantastic Dolphin Ward at Bristol Children's Hospital. Knowing how important the Ward is to so many, we are proud to have funded the redecoration of the HDU (High Dependency Unit) cubicles and bay. It's now an underwater oasis fit for – you guessed it – a dolphin! The Ward will see patients at different stages throughout their hospital journey. This could be as they are transferred from the Paediatric Intensive Care Unit to a High Dependency Unit. After having endured major surgery, it's vital these brave patients have a comfortable and child-friendly space to recover in. The bright and age appropriate artwork has replaced the previously bland walls, providing much-needed comfort and distraction to children going through an incredibly difficult time.

Seahorse Family Room & Quiet Room refurbishment

It is vital that families can step out of that clinical environment and have somewhere to relax away from the stressful environment in the intensive care unit. That's why a refurbishment of the Family Room and Quiet Room on the unit was hugely important and with the support from The True Colours Trust and the generous donation of a kitchen from Howdens we were able to transform the rooms.

Family Support & Attraction tickets

For 20 years, The Grand Appeal has funded local attraction tickets for families, patients and siblings at local venues including Bristol Zoo, We The Curious and the Bristol Hippodrome amongst many others.



“
The quiet room feels like a safe place.
It is a calming little haven.

Helene Craddock,
Supervisory Sister on PICU



“

It's thanks to The Grand Appeal that I have the opportunity to be a Practice Educator, so for that, I am extremely grateful. I am one of 15 specialist staff that the charity funds who support and enrich the amazing staff at Bristol Children's Hospital.

**Lucy Edwards,
Practice Educator**

Practice Nurse Educator

A new role, funded by The Grand Appeal, aims to develop the Band 2 to 4 children's hospital work-force providing opportunities for growth, education and career development. A comprehensive review of recruitment and retention has resulted in a new and improved streamlined process with a view to retain trained staff and introduce the Care Certificate and Clinical Foundation Programme – a national standard of education for all patient-facing band 2 to 4 staff in the children's hospital. Specific departmental study days were funded for staff to improve capability with around 100 staff taking part. Two new apprenticeship programmes have been introduced and the plan to develop all skillset in this band structure are well advanced for the next financial year.

KBG Family Funday

KBG is a rare genetic syndrome affecting approximately 50 children in the UK and between 200-300 internationally. There are very specific features that are unique to this condition and challenges faced by these children and their families, with little infrastructure for support. The Grand Appeal has funded a Family Funday for patients and their parents from throughout the South West region and South Wales with expert speakers, and the opportunity for families to share their experience and for children to meet.

Paediatric Intensive Care Unit afternoon teas

Every two weeks, we host afternoon teas in the Seahorse Intensive Care Unit Parents' Room to encourage the parents to have a short break from

the intense environment of the unit. It's also a chance for them to build relationships with staff and other families outside of a clinical setting.

Starlight/Oncology ward Parent Chairs

Many parents stay at their child's bedside 24/7 within isolation cubicles, whilst their children are undergoing oncology treatment. Parents are often awake at night, so to have somewhere comfortable to sit and rest during the day is vital for their wellbeing and mental health. Following feedback from families we funded reclining soft chairs, proving parents with somewhere they can take a short nap during the day and improving their comfort during their stay which is often weeks at a time.

New & Refurbished Parent Pull Down Beds

When the new children's hospital opened in 2001, The Grand Appeal funded pull-down beds next to each in-patient bed, enabling parents to stay with their child during treatment. After 20 years of use, the beds needed replacing to ensure they could continue to provide comfort for families going through a difficult time with their child. It is essential that parents can have a restful night's sleep near their child for positive mental wellbeing. Also, having family members close is a comfort for patients during what can be a scary process, especially at night.

Oscillator Ventilator for the Seahorse Paediatric Intensive Care Unit

High frequency oscillatory ventilation is used for children who have severe respiratory problems. They may not be able to be ventilated on a

conventional ventilator, or the amount of ventilation required is so great that using a conventional ventilator could cause permanent lung damage. For these patients this new ventilator will deliver high pressures without the side effect of severe lung damage.

Cosman G4 Generator & Switching Box for the Department of Neurosurgery

This complex piece of medical equipment enables enhanced diagnostic and minimally invasive treatment options for cases which are not presently manageable by surgical resection. It is in keeping with national and international standards of best epilepsy surgery practice for which Bristol Children's Hospital is renowned.

Complex Decision-Making Staff Training Seminar

Increasingly, those providing healthcare for children are faced with challenges in the complexity of decisions that need to be made in partnership with families. As a Children's Hospital there is a need to learn from each other, to find a way forward to improve the care delivered to children with life-limiting and life-threatening illnesses. We hosted a meeting for Consultants and Senior Nurses with Dr Hillary Cass to give clinicians the opportunity to share learning and inform the care offered to families and each other.

Marketing Research Officer for Bristol Children's Hospital

In partnership with The Grand Appeal and Bristol Children's Hospital Research Officer researched, developed and recommended an ongoing strategy

to enable the Children's Hospital to deliver transformative communications to raise the profile of Bristol Royal Hospital for Children locally, nationally and internationally.

vCreate Secure video messaging service, helping families stay connected

To minimise the separation anxiety and stress NICU parents feel when they need to go home, we fund this secure video messaging technology between parents and their baby on the NICU which allows nurses to record and send video updates of their tiny patients to parents and families when they are away from the unit.

Neuroinspire Software Upgrade

The neurosurgical department at Bristol Children's Hospital has state of the art facilities including a Grand Appeal funded intra-operative MRI theatre suite, robotic neurosurgery, Gamma Knife surgery, HD-Neuroendoscopy & Neurovasc. The Paediatric Neurosurgical Service at BRCH provides a full range of neurosurgical services including epilepsy surgery, cerebral palsy and movement disorders, tumour surgery, craniofacial surgery, Vascular surgery and hydrocephalus. This new surgical planning software upgrade allows planning of targets and trajectories for stereotactic neurosurgery.

Sleep Studies Equipment and Research

Sleep is important for a child's development as it helps with mental health, stress and problem solving. Sleep is a power source that keeps your mind alert and clam; it recharges the brain's battery. All of this is important in a child for their



development and learning. The Grand Appeal funded an extensive sleep studies programme to allow in-patients and home patients to be monitored for respiratory conditions and ongoing research.

Ultrasound supporting The Wales and West Acute Transport for Children

Gaining central line access, where a needle and plastic line is placed into a central vein, enables lifesaving medication such as antibiotics and fluids to be given quickly to babies. Finding a suitable vein is very challenging to the eye and touch and can result in multiple attempts. The more unwell a baby is then the harder it becomes to do this. The Grand Appeal has funded a new ultrasound machine which now means doctors can visualise the vein on a screen, which makes putting the central line in the right place, the first time much easier. Thus enabling lifesaving treatment to be given quickly which could help to save more lives.

ECG Monitor for the Paediatric Intensive Care Unit

A ECG monitor is used by consultants to check the patient heart rhythm and electrical activity. It can diagnose heart defects, show if the patient is having a silent heart attack, show an enlarged heart and areas with reduced blood flow. It is a key diagnostic test in an Intensive Care Unit when treating patients with or with suspected heart issues. This ECG Monitor forms part of our ongoing funding and partnership with the Seahorse Intensive Care Unit at Bristol Children’s Hospital.



Afternoon of Remembrance

The Grand Appeal has an annual commitment to fund a special afternoon of remembrance for children who have sadly passed away in Bristol Children’s Hospital. The service is a time for sharing memories, sadness and hope for the future; offering support and care to many families. Following the first event we received thoughtful feedback from many parents. One, reflecting the views of many said:

“ The balance of the service, readings and music were just right and I think you did all of the children who were being remembered, proud. Thank you to all the staff for inviting us it was a lovely service.”

We also received feedback from staff:

“ I was privileged to attend the Afternoon of Remembrance on Sunday. Both the service and the venue provided the perfect opportunity for families and staff to come together to remember, reflect, listen, and to share. It reinforced for me the utmost importance of the care that the Children’s Hospital provides to patients and their families, not only during a child’s life but also after. I was incredibly touched by the service and by the stories of the families I spoke with. My sincere thanks to the parents and staff who organised and contributed to the service, and to The Grand Appeal for supporting the event.”

THE WORLD OF GROMIT UNLEASHED

Our multi award-winning retail and commercial operation headquartered at The Mall at Cribbs Causeway continues to flourish. We work closely with our partners and friends at Aardman to create our Gromit Unleashed figurine and retail range, whose popularity, together with the generosity of our retail and trail fanbase continues to surpass our expectations.

Our Gromit Unleashed and Shaun in the City trails are renowned worldwide, and their popularity and supporter base continues to grow. From the first Gromit Unleashed trail in 2013, to Shaun in the City in Bristol and London in 2015 and our most recent trail in 2018 – Gromit Unleashed 2, we’ve created a whole new movement of supporters who continue to help our retail operation to flourish. The Gromit Unleashed exhibitions beginning with the Hong Kong event in 2014, through to the Morph: Naughty at 40 exhibition and more recently the ‘Wallace Collection’ – a gathering of unique ‘paint-your-own’ sculptures created by the fantastically talented artists and designers at Aardman, increase our commercial enterprise and supporter base.



gromitunleashed.org.uk



Our 25 year partnership with Aardman will be celebrated with a new exhibition at Christmas 2020 entitled ‘Gromit Unleashed: The Grand Adventure’ to be held at The Mall at Cribbs Causeway, centred on our flagship retail store. We’ll be bringing new creativity in the form of passports, virtual giving, contactless technology bringing visitors on a journey to Gromit Unleashed. The World of Gromit Unleashed brings fun, creativity and activity to millions of fans throughout the world involving schools, community groups, families, donors, supporters as well as millions of visitors to our fantastic city of Bristol. Fans can expect more activity to come.

Huge thanks once again go to the incredible team at The Mall at Cribbs Causeway for their ongoing support.

WHAT'S NEXT?

Bristol Children's Hospital is embarking on its next period of growth and development. New technologies, innovative thinking and scientific breakthroughs are developing at an unprecedented pace. The Grand Appeal, as the Bristol Children's Hospital Charity, is poised to support and develop a whole new portfolio of activity to support their expansion.

Family accommodation and support

With the Bristol Children's Hospital and NICU covering the largest geographic area of any children's hospital in England, it creates unique challenges for the families and patients who often travel over 200 miles for treatment. The charity now has a portfolio of three family home-from-homes, and we will continue to develop the support for families throughout the next few years. Our family support team are busier than ever helping families to navigate the healthcare journey for their sick baby or child. We plan to consider the resourcing in the team, and apply additional resource to areas of the most need to ensure that our support reaches the widest range of families in the hospital supporting their emotional, financial and psychological needs.

Emergency Department waiting room and digital improvements

After funding a recent major renovation and expansion of its Resuscitation Area and staff facilities, our next project in this world-leading emergency department is the waiting area for patients and families. The number of patients attending the department is at an all-time high, so we plan to transform the waiting experience for the 40,000-plus families they meet each year. Using the latest technology and child and teen-friendly art enhancements, we will prioritise patient and family experience and use creative design to create a world-class waiting room, and soft space.

Pioneering research and life-saving equipment

We will continue our programme of investment in growth and development into

paediatric childhood diseases in the Intensive Care Unit, and research funding for COVID19 – both of which are fundamental to the expert care the hospital can give to its young patients to discover new treatments to improve outcomes in paediatric healthcare.

Cardiac 3D Bioprinting

We are continuing to expand the Grand Appeal's 3D Bioprinting Unit over the coming years – helping the expert engineers, clinicians and surgeons to move towards our ultimate goal of being able to print stem cells, drastically reducing the number of operations that young patients with heart conditions will need. We will continue to invest in the best engineers, technicians and technology to revolutionise cardiac surgery and the lives of children with congenital heart disease.

Neurorehabilitation

Bristol Children's Hospital hosts the Major Trauma Centre for the South West, where children with traumatic brain injuries are rushed to for lifesaving care. The hospital is renowned as a world-leader in neurorehabilitation and we will be investing in the expert clinical staff to undertake research into new treatments and therapies, as well as funding new space to allow patients, families and staff to be able to provide expert support in spacious surroundings.

Patient Hotel

Thanks to the ongoing support of The Yogscast and their community of fans across the world, we are working on plans to open a pioneering new facility which will revolutionise the paediatric patient/hospital experience in the UK. The facility will offer patients and families a smooth transition in their hospital to home journey. Therapy staff will be able to transition patients and families whilst in a home-from-home environment where patients can stay in accessible rooms with their families prior to moving home – often after long period of stay in hospital following traumatic injuries.



This is a multi-year project which is valued at around £2.5 million and which is expected to take at least 4 years to develop.

Expansion of Clinical Facilities at Bristol Children's Hospital and NICU

Paediatric healthcare is developing at such a fast pace, as evidenced by the huge expansion in services since the inception of The Grand Appeal 25 years ago. Bristol Children's Hospital plans to expand their services over the medium and long term to provide healthcare appropriate for patients into the next decade. As a multi-year expansion plan, developments are conceptual but as the Bristol Children's Hospital Charity, we plan to stand shoulder to shoulder with the hospital to ensure that we support every stage of their development and expansion journey.

Investment in new clinical and research facilities

Bristol Children's Hospital is situated in the middle of the city centre adjacent to the adult and specialist facilities of University Hospitals Bristol and Weston NHS Foundation Trust. As such, space is always at a premium and The Grand Appeal already provides off-site accommodation for parents and in 2021 we will increase our space planning to provide specialist accommodation for therapies. We will continue as part of our next journey, to provide more space for ancillary clinical and research facilities so that in-hospital accommodation can be redeveloped and maximized for patient benefit.

25 YEARS OF THANKS

In 2020 we celebrate 25 years since the inception of The Grand Appeal as the Bristol Children's Hospital Charity. In that time, we've invested tens of millions of pounds in the hospital and the Neonatal Intensive Care Unit supporting, in the early days, the creation of the new building for the hospital on Upper Maudlin Street, and from there, the growth of paediatric services, pioneering equipment, ground breaking research and patient, family and staff comforts and facilities.

We've celebrated an historic 25 years partnership with Aardman, whose partners allow the charity to use the Wallace & Gromit characters to spearhead our fundraising. Aardman's support goes far beyond the character association. Their staff regularly undertake fundraising activities – from raffles, to design, retail, cake sales, to teams of 'Aardriders' in our annual events – to all the partners, personally and professionally, we offer our grateful thanks. In particular, and in our 25th year, I would like to extend thanks specifically to Nick Park, the creator of Wallace & Gromit, whose quiet contribution and support is extraordinary.

A highlight of the year under review was 'An Evening with Dawn French', hosted with grateful thanks to Peter Lord, Creative Director at Aardman, and Patron of the charity. Dawn and Pete entertained an audience of donors – many of whom have supported the Appeal for 25 years – with hilarious stories of their lifetime in comedy and animation.

Bristol Children's Hospital – their patients, families and staff – remain the beating heart of the work of The Grand Appeal. We've continued to invest and support the incredible work of all the staff in the hospital throughout the year – from investing in COVID19 research, to opening our third family accommodation facility, life saving equipment and patient support. We have exciting plans to considerably expand our portfolio of activity in the hospital over the coming years, and we've highlighted some of this activity in this Annual Report.

Our work is only possible thanks to the incredible support of our dedicated staff, an army of volunteers, as well as the thousands of corporate donors, fundraisers, individual donors and philanthropic supporters. To you all, our grateful thanks.

Nicola Masters
Director, The Grand Appeal



STRUCTURE, GOVERNANCE AND MANAGEMENT

The Charity is controlled by its governing document, a deed of trust, and constitutes a limited company, limited by guarantee, as defined by the Companies Act 2006.

1. CHARITY COMMISSION

The Grand Appeal received an excellent report from the Charity Commission as part of a routine review of charities in the past 10 years or so.

2. TRUSTEES

As set out in the Articles of Association, Trustees are nominated and approved by the Board. Prospective Trustees are provided with full training and are cognisant of the Primary Purpose, income generation, financial and governance aspects of the charity. The Charity has a board of five Trustees all of whom are independent of the NHS and are appointed for their competence, profile and specialist skills. The Trustees are volunteers and are not paid for their involvement in The Grand Appeal. Trustees have no personal or beneficial interest in Bristol Children’s Hospital, the Neonatal Intensive Care Unit, University Hospitals Bristol NHS Foundation Trust or any other NHS body. Trustees are responsible for delivering sound governance protecting the charity’s assets and safeguarding risks to the charity.

3. OPERATIONAL MANAGEMENT

The Trustees delegate operational management to the Director, Nicola Masters.

The Appeal’s approach to fundraising is set out and reviewed annually by Trustees on a regular basis in Trustee meetings. The Appeal fundraises primarily from philanthropic sources – including the community, individuals, schools, grant making trusts, corporates, events and through family accommodation and hospital patients and their families. The Appeal acknowledges its duty to the Institute of Fundraising Code of practice and to the Data Protection Act. The Appeal also acknowledges the critical importance that no individual should use their position in the Appeal for personal gain or to benefit others at the expense of the Appeal’s Primary Purpose or reputation. The Appeal has received no complaints during the year. The Trustees review pay and benefits policy for Directorate and staff on an annual basis. The Trustees use the expert charity analysis of market leaders XpertHR as the basis for salary/benefit reviews.

4. RELATED PARTIES

Simon Cooper, Jos Moule and Nicola Masters are Directors of the wholly owned subsidiary Cracking Enterprises Ltd. David Sproxton, Peter Lord and Nick Park are Directors of Wallace & Gromit Ltd and Aardman Animations Ltd. Angie Last is an employee of Aardman Animations Ltd. Jos Moule is a partner with Veale Wasbrough Vizards LLP.

5. FUNDS AND RESERVES

The Grand Appeal has a multi-million pound

revolving commitment to Bristol Children’s Hospital and the NICU. As at 31 March 2020, this portfolio stands at approx. £6million spanning around 100 individual projects or programmes of investment in Primary Purpose activity of the charity.

CASH ASSETS HELD BY THE APPEAL

This £6 million commitment is split between restricted funds, designated funds and annual commitments to facilities and services.

1. The Appeal holds a number of different restricted funds to support specific projects as per donor wishes, which fall within the objectives of the charity. Restricted funds stand at approx. £2.1 million.

2. The Appeal Board, in partnership with the Directorate of Bristol Children’s Hospital designates funds from reserves to commit to funding projects in the short and medium term. Highlights of our ongoing funding programme includes a multi-million pound commitment to buy land and to create a multi-purpose patient /home hybrid; a similar multi-million pound commitment to support the expansion of both Bristol Children’s Hospital and the Neonatal Intensive Care Unit; a commitment to provide additional clinical, research and therapy space to assist and enhance those facilities available currently in the hospital footprint, and to fund a continuum of care for the Family Accommodation service. Designated funds stand at approx. £4.2m.

We are committed to raising the additional funds required to fulfill the commitments to the children’s hospital to facilitate the enhanced services, equipment and research to improve childhood health and will continue to rely on the support of funders and donors to support this.

NON-CASH ASSETS HELD BY THE APPEAL

1. The Grand Appeal operates 3 family accommodation ‘homes-from-home’ as part of its Primary Purpose activity. Each home includes suites of contents – such as bedroom furniture, kitchen appliances, together with equipment, comforts, IT, housekeeping and other contents and supplies required to fund and operate a large 29 bed accommodation facility 24 hours a day and 365 days per year. The value of these contents are included as assets, but are not readily transferrable to cash.

2. The Grand Appeal has a wholly owned trading subsidiary ‘Cracking Enterprises’ which usually trades as ‘The world of Gromit Unleashed.’ All profits from this subsidiary are gifted to the Appeal annually. These accounts are presented as consolidated accounts of the Appeal and Cracking Enterprises, and as such include the trading and commercial assets of the Gromit Unleashed brand from which the Grand Appeal continues to raise millions of pounds. These assets are not readily transferrable to cash.

3. The assets include standard IT and furnishing of our HQ and staff base at 30/32 Upper Maudlin Street. These assets are not readily transferrable to cash.

FIXED ASSETS HELD BY THE APPEAL

The Grand Appeal owns 30/32 Upper Maudlin Street, which acts as a dual purpose HQ and family accommodation known as ‘Paul’s House’ which provides 8 en-suite rooms for families opposite Bristol Children’s Hospital. This asset is not readily transferable to cash, particularly as it is used to fulfill the Primary Purpose activity of the charity. The building situated in a prime city centre site and is therefore nominally valued at £2m.

RESERVES POLICY

The Grand Appeal Board takes its responsibility to donors and stakeholders very seriously and at every quarterly Trustee Board meetings reviews extensive Management Information which informs the cash reserves held by the Appeal ensuring a revolving portfolio of commitment for its Primary Purpose activity. In view of the increasing portfolio of activity, reserves are held by the Appeal to ensure that funding can be provided on an ongoing basis for both clinical and non-clinical staff working on the ground in the hospital supporting sick children and families, and to ensure that reserves are sufficient to manage any shocks, volatility or periods of uncertainty in the UK economy.

The programme of Operations and Services run by The Grand Appeal in partnership with, and for, Bristol Children’s Hospital and the Neonatal Intensive Care Unit grows every year. The Appeal is committed to providing a continuum of funding for all three family accommodation facilities over a long-term period; a comprehensive level of ongoing funding for family support and play in hospital; and for ongoing programme of commitment to research and continuing medical developments.

Free cash reserves as at 31.3.20 totals £259,047.

6. RISK MANAGEMENT

The Trustees examine the principal areas of the charity’s operation and receive reports on operations, reputational and financial risk. Trustees are satisfied that the major risks are identified with processes in place for management. Trustees recognize that no absolute assurances can be given and the management provide reasonable confidence that the risks are identified and controlled.

7. INVESTMENT POLICY

Fund investment is controlled by the Executive within the policy set by the Trustees, which is to exercise prudence in the practice of Fund Management. Assets are held in property and cash (on the London money markets) to project and maximise the return on investment and to minimise risk.

8. FINANCIAL REVIEW

During the year under review we raised £2,570,858. Covid 19 will have a major impact on our ability to fundraise in 2020 and whilst we are unable to fully quantify this, it is expected to impact our income generation activities significantly. The Appeal has significant commitments to Bristol Children's Hospital which are designated for expenditure and which are explained in our reserves policy. Through the support of our significant donor base, we are confident that we can continue our programme of investment in the hospital over a three to five year term. We are assured that we can continue as a going concern throughout this period, even if the challenges of Covid19 extend into the next financial year.

9. PUBLIC BENEFIT

The Trustees confirm that they have complied with the duty in the Charities Act 2011 to have due regard to public benefit guidance published by the Charity Commission. The Appeal's Primary Charitable Object is:

The enhancement and improvement for the public benefit of the children's services provided by or at hospitals of the University Hospitals Bristol NHS Foundation Trust (or any successor body) for the care and treatment of children with illnesses, diseases, or disabilities, and in particular by

a) the provision of medical equipment and facilities

for use in the care and treatment of such children

b) the provision of amenities and recreational facilities for the use and benefit of such children

c) the provision of accommodation, amenities, and support for the relatives of such children

d) the provision, improvement or enhancement of any hospital buildings

10. ADVISORY COMMITTEE

During 2018, an Honorary Medical Advisory Committee was established to inform the Board. The HMAc acts in an advisory capacity only, and is not part of the formal accountability structure of the Appeal. The Medical Advisory Committee is not remunerated in any way for their advice, which is provided on a purely voluntary basis. The membership consists of:

• **Dr Giles Haythornthwaite (Chair)** Consultant Paediatric Emergency Department and Clinical Lead for Major Trauma, Clinical Director of Paediatric Medicine, Bristol Children's Hospital

• **Mr Mike Carter** Consultant Paediatric Neurosurgeon, Bristol Children's Hospital

• **Dr James Fraser** Consultant and Clinical Lead for Critical Care, Bristol Children's Hospital

• **Dr Anoo Jain** Consultant Neonatologist and Clinical Lead for the Neonatal Intensive Care Unit, St Michael's Hospital

11. PATRONS BOARD

During 2018, a Patrons Board was established to inform the Board. Membership is entirely voluntary and the Patrons are not remunerated individually for their contribution to the Appeal. The membership consists of:

• **Peter Lord** Co-Founder and Creative Director, Aardman Animations Ltd

• **Nick Park** Creator Wallace & Gromit

• **David Sproxton** Co-Founder and Executive Chairman, Aardman Animations Ltd

STATEMENT OF THE TRUSTEES RESPONSIBILITIES

The Trustees (who are also the directors of Wallace & Gromit's Children's Foundation for the purposes of company law) are responsible for preparing the Report of the Trustees and the financial statements in accordance with applicable law and United Kingdom Accounting Standards (United Kingdom Generally Accepted Accounting Practice).

Company law requires the Trustees to prepare financial statements for each financial year which give a true and fair view of the state of affairs of the charitable company and of the incoming resources and application of resources, including the income and expenditure, of the charitable company for that period. In preparing those financial statements, the Trustees are required to

- select suitable account policies and then apply them consistently;
- observe the methods and principal in the Charity SORP;
- make judgements and estimates that are reasonable and prudent;
- prepare the financial statements on the going concern basis unless it is inappropriate to presume that the charitable company will continue in business.

The Trustees are responsible for keeping proper accounting records which disclose with reasonable accuracy at any time the financial position of the charitable company and to enable them to ensure that the financial statements comply with the Companies Act 2006. They are also responsible for safeguarding the assets of the charitable company and hence for taking reasonable steps for the prevention and detection of fraud and other irregularities.

In so far as the Trustees are aware:

- there is no relevant audit information of which the charitable company's auditors are unaware;

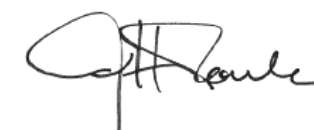
and

- the Trustees have taken all steps that they ought to have taken to make themselves aware of any relevant audit information and to establish that the auditors are aware of that information.

AUDITORS

The auditors Moore will be proposed for re-appointment at the forthcoming Annual General Meeting.

Approved by order of the board of Trustees on the 1 March 2021 and signed on its behalf by:



J H Moule

OPINION

We have audited the financial statements of Wallace & Gromit's Children's Foundation for the year ended 31 March 2020 which comprise the Consolidated Statement of Financial Activities, the Consolidated and Charitable Company's Balance Sheet, the Consolidated Cash Flow Statement and notes to the financial statements, including a summary of significant accounting policies. The financial reporting framework that has been applied in their preparation is applicable law and United Kingdom Accounting Standards (United Kingdom Generally Accepted Accounting Practice).

- In our opinion the financial statements:
- give a true and fair view of the state of group's and of the parent charitable company's affairs as at 31 March 2020 and of its incoming resources and application of resources, including its income and expenditure, for the year then ended;
 - have been properly prepared in accordance with United Kingdom Generally Accepted Accounting Practice; and
 - have been prepared in accordance with the requirements of the Companies Act 2006.

BASIS FOR OPINION

We conducted our audit in accordance with International Standards on Auditing (UK) (ISAs (UK)) and applicable law. Our responsibilities under those standards are further described in the Auditors responsibilities for the audit of the financial statements section of our report. We

are independent of the charitable company in accordance with the ethical requirements that are relevant to our audit of the financial statements in the UK, including the FRC's Ethical Standard, and the provisions available for small entities, in the circumstances set out in note 21 to the financial statements, and we have fulfilled our other ethical responsibilities in accordance with these requirements. We believe that the audit evidence we have obtained is sufficient and appropriate to provide a basis for our opinion.

CONCLUSIONS RELATING TO GOING CONCERN

We have nothing to report in respect of the following matters in relation to which the ISAs (UK) require us to report to you where:

- the Trustees' use of the going concern basis of accounting in the preparation of the financial statements is not appropriate; or
- the Trustees have not disclosed in the financial statements any identified material uncertainties that may cast significant doubt about the charitable company's ability to continue to adopt the going concern basis of accounting for a period of at least twelve months from the date when the financial statements are authorised for issue.

OTHER INFORMATION

The trustees are responsible for the other information. The other information comprises the information included in the annual report, other than the financial statements and our Report of the

Independent Auditors thereon.

Our opinion on the financial statements does not cover the other information and, except to the extent otherwise explicitly stated in our report, we do not express any form of assurance conclusion thereon.

In connection with our audit of the financial statements, our responsibility is to read the other information and, in doing so, consider whether the other information is materially inconsistent with the financial statements or our knowledge obtained in the audit or otherwise appears to be materially misstated. If we identify such material inconsistencies or apparent material misstatements, we are required to determine whether there is a material misstatement in the financial statements or a material misstatement of the other information. If, based on the work we have performed, we conclude that there is a material misstatement of this other information, we are required to report that fact. We have nothing to report in this regard.

OPINION ON OTHER MATTERS PRESCRIBED BY THE COMPANIES ACT 2006

In our opinion, based on the work undertaken in the course of the audit:

- the information given in the Report of the Trustees for the financial year for which the financial statements are prepared is consistent with the financial statements; and

- the Report of the Trustees has been prepared in accordance with applicable legal requirements.

MATTERS ON WHICH WE ARE REQUIRED TO REPORT BY EXCEPTION

In the light of the knowledge and understanding of the charitable group and the parent charitable company and its environment obtained in the course of the audit, we have not identified material misstatements in the Report of the Trustees.

MATTERS ON WHICH WE ARE REQUIRED TO REPORT BY EXCEPTION

We have nothing to report in respect of the following matters where the Companies Act 2006 requires us to report to you if, in our opinion:

- adequate accounting records have not been kept or returns adequate for our audit have not been received from branches not visited by us; or
- the financial statements are not in agreement with the accounting records and returns; or
- certain disclosures of Trustees' remuneration specified by law are not made; or
- we have not received all the information and explanations we require for our audit; or
- the Trustees were not entitled to take advantage of the small companies exemption from the requirement to prepare a Strategic Report or in preparing the Report of the Trustees.

RESPONSIBILITIES OF TRUSTEES

As explained more fully in the Statement of Trustees Responsibilities, the trustees (who are

also the directors of the charitable company for the purposes of company law) are responsible for the preparation of the financial statements and for being satisfied that they give a true and fair view, and for such internal control as the trustees determine is necessary to enable the preparation of financial statements that are free from material misstatement, whether due to fraud or error.

In preparing the financial statements, the trustees are responsible for assessing the charitable company's ability to continue as a going concern, disclosing, as applicable, matters related to going concern and using the going concern basis of accounting unless the trustees either intend to liquidate the charitable company or to cease operations, or have no realistic alternative but to do so.

OUR RESPONSIBILITIES FOR THE AUDIT OF THE FINANCIAL STATEMENTS

Our objectives are to obtain reasonable assurance about whether the financial statements as a whole are free from material misstatement, whether due to fraud or error, and to issue a Report of the Independent Auditors that includes our opinion. Reasonable assurance is a high level of assurance, but is not a guarantee that an audit conducted in accordance with ISAs (UK) will always detect a material misstatement when it exists. Misstatements can arise from fraud or error and are considered material if, individually or in the aggregate, they could reasonably be expected to

influence the economic decisions of users taken on the basis of these financial statements.

A further description of our responsibilities for the audit of the financial statements is located on the Financial Reporting Council's website at www.frc.org.uk/auditorsresponsibilities. This description forms part of our Report of the Independent Auditors.

USE OF OUR REPORT

This report is made solely to the charitable company's members, as a body, in accordance with Chapter 3 of Part 16 of the Companies Act 2006. Our audit work has been undertaken so that we might state to the charitable company's members those matters we are required to state to them in an auditors' report and for no other purpose. To the fullest extent permitted by law, we do not accept or assume responsibility to anyone other than the charitable company and the charitable company's members as a body, for our audit work, for this report, or for the opinions we have formed.

MARK POWELL (SENIOR STATUTORY AUDITOR)
for and on behalf of Moore,
Chartered Accountants and Statutory Auditors
First Floor, St Augustine's Parade, Bristol, BS1 4UL



Date: 09/03/2021



“

When you're feeling low it's things like music therapy that make you smile. Whenever Claire, The Grand Appeal Music Therapist turns up Phoebe's face beams. She literally loves it.

Nathan,
Phoebe's dad



LAND'S
END
2019

NEW YORK 3147

JOHN O'GROATS 874



CONSOLIDATED STATEMENT OF FINANCIAL ACTIVITIES

For the year ended 31 March 2020

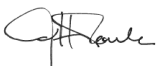
CONSOLIDATED STATEMENT OF FINANCIAL ACTIVITIES					
for the year ended 31 March 2020					
		Unrestricted funds	Restricted funds	2020 Total funds	2019 Total funds
	Notes	£	£	£	£
INCOME AND ENDOWMENTS FROM					
Donations and legacies	2	201,372	1,600,633	1,802,005	3,256,993
Other trading activity	2	730,636	-	730,636	1,234,600
Investment income	3	<u>38,217</u>	<u>-</u>	<u>38,217</u>	<u>32,386</u>
Total		970,225	1,600,633	2,570,858	4,523,979
EXPENDITURE ON					
Raising funds					
Cost of fundraising	6	341,171	-	341,171	331,092
Cost of trading		636,210	-	636,210	675,212
Charitable activities					
Support for Bristol Children's Hospital	7	395,597	435,998	831,595	876,249
Support for Special Care Baby Unit/ Cots for Tots		31,577	206,964	238,541	214,519
Wallace & Gromit's Children's Charity		-	78,090	78,090	100,720
Other		<u>367,122</u>	<u>-</u>	<u>367,122</u>	<u>354,980</u>
Total		1,771,677	721,052	2,492,729	2,552,772
NET INCOME		(801,452)	879,581	78,129	1,971,207
Transfers between funds	18	<u>-</u>	<u>-</u>	<u>-</u>	<u>-</u>
Net movement in funds		(801,452)	879,581	78,129	1,971,207
RECONCILIATION OF FUNDS					
Total funds brought forward		7,797,956	1,194,027	8,991,983	7,020,776
TOTAL FUNDS CARRIED FORWARD		<u>6,996,504</u>	<u>2,073,608</u>	<u>9,070,112</u>	<u>8,991,983</u>

CONTINUING OPERATIONS
All income and expenditure has arisen from continuing activities.

BALANCE SHEETS					
At 31 March 2020					
		2020 Group	2020 Charity	2019 Group	2019 Charity
	Notes	£	£	£	£
FIXED ASSETS					
Tangible assets	14	2,493,334	2,493,334	2,053,983	2,053,983
Investments		<u>-</u>	<u>1</u>	<u>-</u>	<u>1</u>
		2,493,334	2,493,335	2,053,983	2,053,984
CURRENT ASSETS					
Stocks		113,442	-	195,315	-
Debtors	15	35,597	321,615	91,834	228,050
Cash at bank		<u>6,570,087</u>	<u>6,242,967</u>	<u>7,072,659</u>	<u>6,367,584</u>
		6,719,126	6,564,582	7,359,808	6,595,634
CREDITORS					
Amounts falling due within one year	16	(142,348)	(82,231)	(421,808)	(217,023)
		<u>-</u>	<u>-</u>	<u>-</u>	<u>-</u>
NET CURRENT ASSETS		<u>6,576,778</u>	<u>6,482,351</u>	<u>6,938,000</u>	<u>6,378,611</u>
TOTAL ASSETS LESS CURRENT LIABILITIES		<u>9,070,112</u>	<u>8,975,686</u>	<u>8,991,983</u>	<u>8,432,595</u>
NET ASSETS		<u><u>9,070,112</u></u>	<u><u>8,975,686</u></u>	<u><u>8,991,983</u></u>	<u><u>8,432,595</u></u>
FUNDS					
	18				
Unrestricted designated		4,244,123	4,244,123	5,926,938	5,926,938
Unrestricted funds		2,752,381	2,657,955	1,871,018	1,311,630
Restricted funds		<u>2,073,608</u>	<u>2,073,608</u>	<u>1,194,027</u>	<u>1,194,027</u>
TOTAL FUNDS		<u><u>9,070,112</u></u>	<u><u>8,975,686</u></u>	<u><u>8,991,983</u></u>	<u><u>8,432,595</u></u>

These financial statements have been prepared in accordance with the special provisions of Part 15 of the Companies Act 2006 relating to small charitable companies.

The financial statements were approved by the Board of Trustees on 09/03/2021 and were signed on its behalf by:



J H Moule - Trustee

NOTES TO THE CONSOLIDATED CASH FLOW STATEMENT

For the year ended 31 March 2020

1. RECONCILIATION OF NET INCOME TO NET CASH FLOW FROM OPERATING ACTIVITIES			
		2020 £	2019 £
Net income for the reporting period (as per the statement of financial activities)		78,129	1,971,207
Adjustments for:			
Depreciation charges		83,148	54,876
Decrease/(increase) in stock		81,873	(41,339)
Decrease/(increase) in debtors		56,237	129,330
Increase/(decrease) in creditors		<u>(279,460)</u>	<u>(359,166)</u>
Net cash provided by (used in) operating activities		<u>19,927</u>	<u>1,754,908</u>
2. ANALYSIS OF CHANGES IN NET FUNDS			
	At 1.4.19 £	Cash flow £	At 31.3.20 £
Net cash			
Cash at bank and in hand	<u>7,072,659</u>	<u>(502,572)</u>	<u>6,570,087</u>
	<u>7,072,659</u>	<u>(502,572)</u>	<u>6,570,087</u>
Total	<u><u>7,072,659</u></u>	<u><u>(502,572)</u></u>	<u><u>6,570,087</u></u>

CONSOLIDATED CASH FLOW STATEMENT			
for the year ended 31 March 2020			
	Notes	2020 £	2019 £
Cash flows from operating activities:			
Cash generated from operations	1	<u>19,927</u>	<u>1,754,908</u>
Net cash provided by (used in) operating activities		<u>19,927</u>	<u>1,754,908</u>
Cash flows from investing activities:			
Purchase of tangible fixed assets		<u>(522,499)</u>	<u>(226,460)</u>
Net cash provided by (used in) investing activities		<u>(522,499)</u>	<u>(226,460)</u>
Change in cash and cash equivalents in the reporting period		<u>(502,572)</u>	<u>1,528,448</u>
Cash and cash equivalents at the beginning of the reporting period		<u>7,072,659</u>	<u>5,544,211</u>
Cash and cash equivalents at the end of the reporting period		<u>6,570,087</u>	<u>7,072,659</u>

STATUTORY INFORMATION

Wallace & Gromit's Children's Foundation is a private company, limited by guarantee, registered in England and Wales. The company's registered number and registered office address can be found on the Company Information page.

1. ACCOUNTING POLICIES

Basis of preparing the financial statements

The financial statements of the charitable company, which is a public benefit entity under FRS 102, have been prepared in accordance with the Charities SORP (FRS 102) 'Accounting and Reporting by Charities: Statement of Recommended Practice applicable to charities preparing their accounts in accordance with the Financial Reporting Standard applicable in the UK and Republic of Ireland (FRS 102) (effective 1 January 2019)', Financial Reporting Standard 102 'The Financial Reporting Standard applicable in the UK and Republic of Ireland' and the Companies Act 2006. The financial statements have been prepared under the historical cost convention with the exception of investments which are included at market value.

The consolidated accounts include the trading activities, assets and liabilities of the subsidiary company and are prepared in sterling which is the functional currency of the entity.

Going Concern

At the balance sheet date, the charity had net current assets of £6,482k and net assets of £8,975k. The charity continues to meet all its liabilities as they fall due.

The trustees have further considered the level of funds held and the expected level of income and expenditure for 12 months from authorising these financial statements in light of the COVID-19 pandemic and specifically those regions affecting their operations. The trustees believe budgeted income and expenditure and the level of reserves held are sufficient for the charity to be able to continue as a going concern.

Income

All income is recognised in the Statement of Financial Activities once the charity has entitlement to the funds, it is probable that the income will be received and the amount can be measured reliably.

Expenditure

Liabilities are recognised as expenditure as soon as there is a legal or constructive obligation committing the charity to that expenditure, it is probable that a transfer of economic benefits will be required in settlement and the amount of the obligation can be measured reliably. Expenditure is accounted for on an accruals basis and has been classified under headings that aggregate all cost related to the category. Where costs cannot be directly attributed to particular headings they have been allocated to activities on a basis consistent with the use of resources.

Grants offered subject to conditions which have not been met at the year end date are noted as a commitment but not accrued as expenditure.

Allocation and apportionment of costs

Staff costs are apportioned based on the proportion of time spent on the relevant activities. Other costs are directly allocated to the activities that they relate to.

Tangible fixed assets

Depreciation is provided at the following rates in order to write off each asset over its estimated useful life.

Freehold property	- Straight line over 50 years
Leasehold improvements	- Straight line over the period of the lease
Office equipment	- Straight line over 4 years
Fixture & Fittings	- Straight line over 5 years

Stocks

Stocks are valued at the lower of cost and net realisable value after making due allowance for obsolete and slow moving items.

Taxation

The charity is exempt from corporation tax on its charitable activities.

1. ACCOUNTING POLICIES - continued

Fund accounting

Unrestricted funds can be used in accordance with the charitable objectives at the discretion of the trustees.

Restricted funds can only be used for particular restricted purposes within the objects of the charity. Restrictions arise when specified by the donor or when funds are raised for particular restricted purposes.

Further explanation of the nature and purpose of each fund is included in the trustees' report.

Pension costs and other post-retirement benefits

The charitable company operates a defined contribution pension scheme. Contributions payable to the charitable company's pension scheme are charged to the Statement of Financial Activities in the period to which they relate.

Financial instruments

Financial instruments are classified and accounted for, according to the substance of the contractual arrangement, as either financial assets, financial liabilities or equity instruments. An equity instrument is any contract that evidences a residual interest in the assets of the company after deducting all of its liabilities.

2. DONATIONS AND LEGACIES AND MERCHANDISING INCOME

	2020 £	2019 £
Income Grand Appeal	1,802,005	3,256,993
Other trading activity	<u>730,636</u>	<u>1,234,600</u>
	<u>2,532,641</u>	<u>4,491,593</u>

3. INVESTMENT INCOME

	2020 £	2019 £
Bank deposit interest	38,217	32,386
Loan interest	<u>-</u>	<u>-</u>
	<u>38,217</u>	<u>32,386</u>

4. INCOME AND RESULTS OF THE CHARITY

	2020 £	2019 £
Donations	1,802,005	3,256,993
Interest receivable	38,217	32,386
Other income	<u>559,388</u>	<u>56,448</u>
Incoming resources	2,399,610	3,345,827
Raising funds	341,171	331,092
Charitable activities	1,148,226	1,191,488
Governance costs	<u>367,122</u>	<u>354,980</u>
Resources expended	1,856,519	1,877,560
Net income/ (expenditure) for the year	<u>543,091</u>	<u>1,468,267</u>

5. MERCHANDISING SALES AND INVESTMENT IN TRADING SUBSIDIARY

The wholly-owned trading subsidiary, Cracking Enterprises Limited, which is incorporated in the United Kingdom, pays all its profits to the charity by gift aid. The charity owns the entire issued share capital of 1,000 shares of £1 each. A summary of the trading results is shown below.

Summary profit and loss account:

	2020 £	2019 £
Turnover	730,636	1,234,600
Cost of sales and administrative expenses	<u>(636,210)</u>	<u>(675,212)</u>
Net profit	<u>94,426</u>	<u>559,388</u>
The assets and liabilities of the subsidiary were :		
Fixed assets	-	-
Current assets	444,529	921,392
Creditors	<u>(349,103)</u>	<u>(361,004)</u>
Total net assets	<u>95,426</u>	<u>560,388</u>
Share capital	1,000	1,000
Retained earnings	<u>94,426</u>	<u>559,388</u>
	<u>95,426</u>	<u>560,388</u>

6. RAISING FUNDS

Raising donations and legacies

	2020 £	2019 £
Staff costs	271,947	254,654
Non-staff costs	69,224	76,438
Expenditure associated with trading	<u>636,210</u>	<u>675,212</u>
	<u>977,381</u>	<u>1,006,304</u>

7. CHARITABLE ACTIVITIES COSTS

	Direct costs	Grant funding of activities (see note 8)	Total
	£	£	£
Support for Bristol Children's Hospital	506,330	325,265	831,595
Support for Special Care Baby Unit/Cots for Tots	79,497	159,044	238,541
Wallace & Gromit's Children's Charity	<u>576</u>	<u>77,514</u>	<u>78,090</u>
	<u>586,403</u>	<u>561,823</u>	<u>1,148,226</u>

Prior year comparatives

	Direct costs	Grant funding of activities (see note 8)	Total
	£	£	£
Support for Bristol Children's Hospital	482,165	394,084	876,249
Support for Special Care Baby Unit/Cots for Tots	80,288	134,231	214,519
Wallace & Gromit's Children's Charity	<u>-</u>	<u>100,720</u>	<u>100,720</u>
	<u>562,453</u>	<u>629,035</u>	<u>1,191,488</u>

8. GRANTS PAYABLE

	2020 £	2019 £
Support for Bristol Children's Hospital	325,265	394,084
Support for Special Care Baby Unit/ Cots for Tots	159,044	134,231
Wallace & Gromit's Children's Charity	<u>77,514</u>	<u>100,720</u>
	<u>561,823</u>	<u>629,035</u>
The total grants paid to institutions during the year was as follows:		
	2020 £	2019 £
The Royal Hospital for Children, Bristol	325,265	394,084
Special Baby Care Unit/ Cots for Tots	159,044	134,231
Wallace & Gromit's Children's Charity	<u>77,514</u>	<u>100,720</u>
	<u>561,823</u>	<u>629,035</u>

NOTES TO THE FINANCIAL STATEMENTS - CONTINUED
for the year ended 31 March 2020

9. SUPPORT COSTS

	Governance costs 2020 £	2019 £
Other – Governance costs	<u>367,122</u>	<u>354,980</u>

10. NET INCOME/(EXPENDITURE)

Net income/(expenditure) is stated after charging/(crediting):		
	2020 £	2019 £
Auditors' remuneration	22,958	22,880
Depreciation - owned assets	<u>83,148</u>	<u>54,876</u>

11. TRUSTEES' REMUNERATION AND BENEFITS

There were no trustees' remuneration or other benefits for the year ended 31 March 2020 nor for the year ended 31 March 2019.

Trustees' expenses
There were no trustees' expenses paid for the year ended 31 March 2020 nor for the year ended 31 March 2019.

12. STAFF COSTS

	2020 £	2019 £
Wages and salaries	851,207	747,224
Social security costs	57,469	46,555
Other pension costs	<u>58,769</u>	<u>36,404</u>
	<u>967,445</u>	<u>830,183</u>

The average monthly number of employees during the year was as follows:

	2020 <u>38</u>	2019 <u>35</u>
All staff - full time & part time		

The number of employees whose employee benefits (excluding pension costs) exceeded £60,000 was:

	2020	2019
£70,001-£80,000	1	-
£80,001-£90,000	<u>-</u>	<u>1</u>

Key management personnel: the total amount of employee benefits received by key management personnel is £162,023 (2019:£137,861).

NOTES TO THE FINANCIAL STATEMENTS - CONTINUED
for the year ended 31 March 2020

13. COMPARATIVES FOR THE STATEMENT OF FINANCIAL ACTIVITIES

	Unrestricted funds £	Restricted funds £	Total funds £
INCOME AND ENDOWMENTS FROM			
Donations and legacies	2,321,128	935,865	3,256,993
Other trading activities	1,234,600	-	1,234,600

Investment income	32,386	-	32,386
Other income	<u>-</u>	<u>-</u>	<u>-</u>

Total	3,588,114	935,865	4,523,979
--------------	-----------	---------	-----------

EXPENDITURE ON			
Raising funds	1,006,304	-	1,006,304
Charitable activities			
Support for Bristol Children's Hospital	271,793	604,456	876,249
Support for Special Care Baby Unit/ Cots for Tots	214,519	-	214,519
Wallace & Gromit's Children's Charity	100,720	-	100,720

Other	<u>354,980</u>	<u>-</u>	<u>354,980</u>
-------	----------------	----------	----------------

Total	1,948,316	604,456	2,552,772
--------------	-----------	---------	-----------

NET INCOME	1,639,798	331,409	1,971,207
-------------------	-----------	---------	-----------

RECONCILIATION OF FUNDS

Total funds brought forward	6,158,158	862,618	7,020,776
------------------------------------	-----------	---------	-----------

TOTAL FUNDS CARRIED FORWARD	<u>7,797,956</u>	<u>1,194,027</u>	<u>8,991,983</u>
------------------------------------	------------------	------------------	------------------

NOTES TO THE FINANCIAL STATEMENTS - CONTINUED
for the year ended 31 March 2020

14. TANGIBLE FIXED ASSETS

<i>Consolidated</i>	Freehold property £	Leasehold improvements £	Fixtures & Fittings £	Office equipment £	Totals £
COST					
At 1 April 2019	2,053,410	-	65,382	14,301	2,133,093
Additions	<u>-</u>	<u>480,559</u>	<u>28,700</u>	<u>13,240</u>	<u>522,499</u>

At 31 March 2020	<u>2,053,410</u>	<u>480,559</u>	<u>94,082</u>	<u>27,541</u>	<u>2,655,592</u>
------------------	------------------	----------------	---------------	---------------	------------------

DEPRECIATION					
At 1 April 2019	41,068	-	25,468	12,574	79,110
Charge for year	<u>41,068</u>	<u>19,222</u>	<u>18,816</u>	<u>4,042</u>	<u>83,148</u>

At 31 March 2020	<u>82,136</u>	<u>19,222</u>	<u>44,284</u>	<u>16,616</u>	<u>162,258</u>
------------------	---------------	---------------	---------------	---------------	----------------

NET BOOK VALUE					
At 31 March 2020	<u>1,971,274</u>	<u>461,337</u>	<u>49,798</u>	<u>10,925</u>	<u>2,493,334</u>

At 31 March 2019	<u>2,012,342</u>	<u>-</u>	<u>39,914</u>	<u>1,727</u>	<u>2,053,983</u>
------------------	------------------	----------	---------------	--------------	------------------

Parent company

COST					
At 1 April 2019	2,053,410	-	65,382	13,877	2,132,669
Additions	<u>-</u>	<u>480,559</u>	<u>28,700</u>	<u>13,240</u>	<u>522,499</u>

At 31 March 2020	<u>2,053,410</u>	<u>480,559</u>	<u>94,082</u>	<u>27,117</u>	<u>2,655,168</u>
------------------	------------------	----------------	---------------	---------------	------------------

DEPRECIATION					
At 1 April 2019	41,068	-	25,468	12,150	78,686
Charge for year	<u>41,068</u>	<u>19,222</u>	<u>18,816</u>	<u>4,042</u>	<u>83,148</u>

At 31 March 2020	<u>82,136</u>	<u>19,222</u>	<u>44,284</u>	<u>16,192</u>	<u>161,834</u>
------------------	---------------	---------------	---------------	---------------	----------------

NET BOOK VALUE					
At 31 March 2020	<u>1,971,274</u>	<u>461,337</u>	<u>49,798</u>	<u>10,925</u>	<u>2,493,334</u>

At 31 March 2019	<u>2,012,342</u>	<u>-</u>	<u>39,914</u>	<u>1,727</u>	<u>2,053,983</u>
------------------	------------------	----------	---------------	--------------	------------------

NOTES TO THE FINANCIAL STATEMENTS - CONTINUED
for the year ended 31 March 2020

15. DEBTORS

	Charity		Group	
	2020 £	2019 £	2020 £	2019 £
Amounts falling due within one year:				
Trade debtors	2,000	-	3,141	12,755
Amounts due from group undertakings	289,985	157,218	-	-
Other debtors	4,015	70,832	6,841	79,079
Prepayments & accrued income	25,615	-	25,615	-
	<u>321,615</u>	<u>228,050</u>	<u>35,597</u>	<u>91,834</u>

16. CREDITORS: AMOUNTS FALLING DUE WITHIN ONE YEAR

	Charity		Group	
	2020 £	2019 £	2020 £	2019 £
Trade creditors	14,065	17,354	14,439	18,626
Other creditors	68,166	199,669	84,738	279,258
Accrued expenses	-	-	43,171	123,924
	<u>82,231</u>	<u>217,023</u>	<u>142,348</u>	<u>421,808</u>

17. LEASING AGREEMENTS

Minimum lease payments under non-cancellable operating leases fall due as follows:

	2020 £	2019 £
Within one year	16,978	8,338
Between one and five years	<u>47,252</u>	<u>24,439</u>
	<u>64,230</u>	<u>32,777</u>

18. MOVEMENT IN FUNDS

	At 1.4.19 £	Net movement in funds £	Transfers between funds £	At 31.3.20 £
Unrestricted funds – Group current year				
The Grand Appeal	1,871,018	(801,452)	1,682,815	2,752,381
Designated	<u>5,926,938</u>	<u>-</u>	<u>(1,682,815)</u>	<u>4,244,123</u>
	<u>7,797,956</u>	<u>(801,452)</u>	<u>-</u>	<u>6,996,504</u>
Unrestricted funds – Charity current year				
The Grand Appeal	1,311,630	(336,490)	1,682,815	2,657,955
Designated	<u>5,926,938</u>	<u>-</u>	<u>(1,682,815)</u>	<u>4,244,123</u>
	<u>7,238,568</u>	<u>(336,490)</u>	<u>-</u>	<u>6,902,078</u>
Restricted funds – Group and Charity				
Bristol Children’s Hospital	758,481	(33,719)	-	724,762
Patient Hotel	-	873,186	-	873,186
Cots for Tots - NICU	283,443	94,643	-	378,086
Wallace & Gromit’s Children’s Charity	<u>152,103</u>	<u>(54,529)</u>	<u>-</u>	<u>97,574</u>
	<u>1,194,027</u>	<u>879,581</u>	<u>-</u>	<u>2,073,608</u>
Total funds – Current year Group	<u>8,991,983</u>	<u>78,129</u>	<u>-</u>	<u>9,070,112</u>
Charity	<u>8,432,595</u>	<u>543,091</u>	<u>-</u>	<u>8,975,686</u>
Net movement in funds, included in the above are as follows:		Incoming resources £	Resources expended £	Movement in funds £
Unrestricted funds - Group				
The Grand Appeal		<u>970,225</u>	<u>(1,771,677)</u>	<u>(801,452)</u>
Unrestricted funds - Charity				
The Grand Appeal		<u>798,977</u>	<u>(1,135,467)</u>	<u>(336,490)</u>
Restricted funds – Group and Charity				
Bristol Children’s Hospital		397,239	(430,958)	(33,719)
Patient Hotel		878,226	(5,040)	873,186
Cots for Tots - NICU		301,607	(206,964)	94,643
Wallace & Gromit’s Children’s Charity		<u>23,561</u>	<u>(78,090)</u>	<u>(54,529)</u>
		<u>1,600,633</u>	<u>(721,052)</u>	<u>879,581</u>
Total funds Group		<u>2,570,858</u>	<u>(2,492,729)</u>	<u>78,129</u>
Charity		<u>2,399,610</u>	<u>(1,856,519)</u>	<u>543,091</u>

18. MOVEMENT IN FUNDS - continued

Comparatives for movement in funds	At 1.4.18 £	Net movement in funds £	Transfers between funds £	At 31.3.19 £
Unrestricted funds - Group				
The Grand Appeal	1,487,466	1,639,798	(1,256,246)	1,871,018
Designated	<u>4,670,692</u>	<u>-</u>	<u>1,256,246</u>	<u>5,926,938</u>
	<u>6,158,158</u>	<u>1,639,798</u>	<u>-</u>	<u>7,797,956</u>
Unrestricted funds - Charity				
The Grand Appeal	1,431,020	1,136,856	(1,256,246)	1,311,630
Designated	<u>4,670,692</u>	<u>-</u>	<u>1,256,246</u>	<u>5,926,938</u>
	<u>6,101,712</u>	<u>1,136,856</u>	<u>-</u>	<u>7,238,568</u>
Restricted funds – Group and Charity				
Bristol Children’s Hospital	377,480	381,001	-	758,481
Cots for Tots - NICU	244,906	38,537	-	283,443
Wallace & Gromit’s Children’s Charity	<u>240,232</u>	<u>(88,129)</u>	<u>-</u>	<u>152,103</u>
	<u>862,618</u>	<u>331,409</u>	<u>-</u>	<u>1,194,027</u>
Total funds Group	<u>7,020,776</u>	<u>1,971,207</u>	<u>-</u>	<u>8,991,983</u>
Charity	<u>6,964,330</u>	<u>1,468,265</u>	<u>-</u>	<u>8,432,595</u>
Net movement in funds, included in the above are as follows:		Incoming resources £	Resources expended £	Movement in funds £
Unrestricted funds - Group				
The Grand Appeal		<u>3,588,114</u>	<u>(1,948,316)</u>	<u>1,639,798</u>
Unrestricted funds - Charity				
The Grand Appeal		<u>2,409,960</u>	<u>(1,273,104)</u>	<u>1,136,856</u>
Restricted funds – Group and Charity				
Bristol Children’s Hospital		680,066	(299,065)	381,001
Cots for Tots - NICU		241,387	(202,850)	38,537
Wallace & Gromit’s Children’s Charity		<u>14,412</u>	<u>(102,541)</u>	<u>(88,129)</u>
		<u>935,865</u>	<u>(604,456)</u>	<u>331,409</u>
Total funds Group		<u>4,523,979</u>	<u>(2,552,772)</u>	<u>1,971,207</u>
Charity		<u>3,345,825</u>	<u>(1,877,560)</u>	<u>1,468,265</u>

18. MOVEMENT IN FUNDS - continued

Designated Funds:	
As described in the accompanying Trustee statement for the year to 31/3/20, the Grand Appeal has a multi-million pound annual commitment to Bristol Children’s Hospital. Some of these projects are described in the Annual Report. Typically the commitment represents over 100 individual projects at any one time. At the time of writing, the largest single commitment is £2 million, and the smallest is £50. Some projects are multi-year commitments, others will take more than 12 months to come to fruition. The Total Funds figure includes property, used as Family Accommodation and the charity’s HQ, which, allowing for depreciation, is valued at nearly £2 million.	
Transfers between funds:	
The transfers between funds are due to movements in designated funds.	

19. CAPITAL COMMITMENTS

	2020 £	2019 £
Designated funds: Contracted but not provided for in the financial statements	<u>4,244,123</u>	<u>5,926,938</u>

20. RELATED PARTY DISCLOSURES

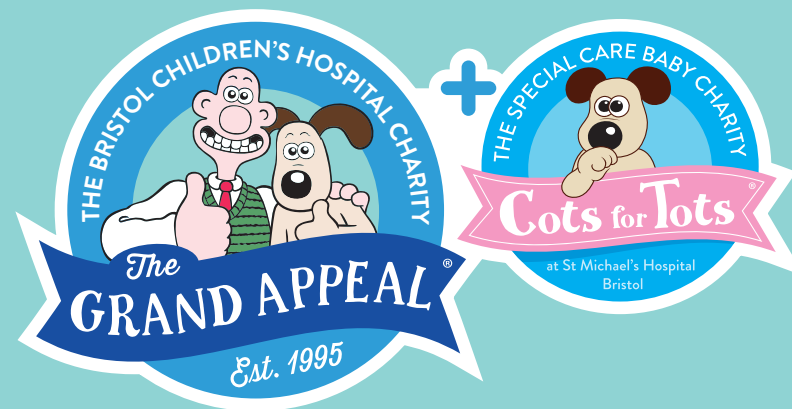
During the year the charity recharged wages paid on behalf of the trading subsidiary, Cracking Enterprises Limited, totalling £154,705 (2019: £198,707). In line with the intentions of the trading subsidiary the profits for the prior year, totalling £559,338 (2019: £56,448) were paid to the charity during the year. There was a debtor of £289,985 (2019: £157,218) owing from the trading subsidiary to the charity as at the year end.	
Simon Cooper and Jos Moule are directors of Cracking Enterprises Limited and Trustees of Wallace & Gromit's Children's Foundation. Nicola Masters is a director of Cracking Enterprises Limited and a director of Wallace & Gromit's Children's Foundation.	
Wallace & Gromit's Children's Foundation and Cracking Enterprises Limited incurred legal costs of £17,096 (2019: £5,144) and £1,183 (2019: £9,591) respectively with Veale Wasbrough Vizards LLP during the year. Jos Moule, is a partner in Veale Wasbrough Vizards LLP.	
Simon Cooper is a Trustee of Wallace & Gromit's Children's Foundation and a Trustee of the Musicspace Trust. Music therapy within the Bristol Children's Hospital is provided by the Musicspace Trust and funded by the charity at a cost of £51,656.	
Nick Park, Peter Lord and David Sproxtton are Patrons of Wallace & Gromit's Children's Foundation Limited and Directors of Aardman Animations Limited. Angie Last is a Trustee of Wallace & Gromit's Children's Foundation and an employee of Aardman Animations Limited. Cracking Enterprises Limited incurred net costs of £83,908 (2019: £30,883) relating to Aardman's support for the Gromit Unleashed, Gromit Unleashed 2 and Shaun in the City arts trails which have raised to date around £6million for the primary purpose of Wallace & Gromit's Children's Foundation. This support covers web and app development for the charity's brands, rights, intellectual property, the development of merchandise and associated royalties, licensing and design.	

21. APB ETHICAL STANDARD - PROVISIONS AVAILABLE FOR SMALL ENTITIES

In common with many other businesses of our size and nature we use our auditors to prepare and submit returns to the tax authorities and assist with the preparation of the financial statements.

22. PURPOSE OF RESTRICTED FUNDS

The Grand Appeal receives many donations from supporters, donors, patients, friends, families and the general public with a specific designation. The Appeal acknowledges that all donations received for a specific ward or department should be spent according to the needs of the donor and therefore retains the above funds to ensure full compliance with the individual donor's intentions. These funds are then used to provide additional 'added value' facilities and to comply with donor wishes.



grandappeal.org.uk